

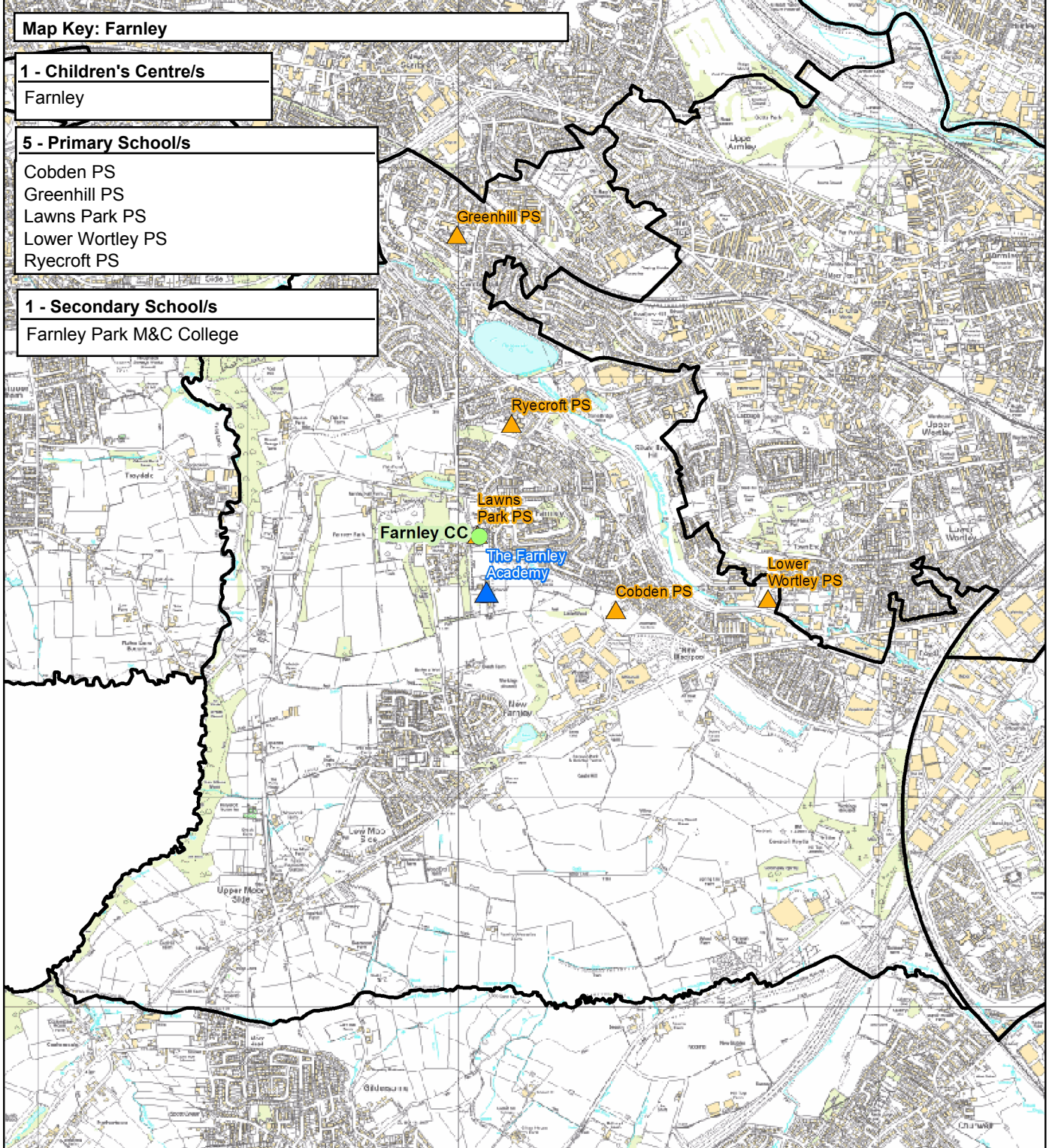
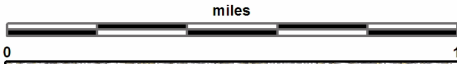
# Farnley

This report was produced by the Children's Performance Service on 01/06/2012. The information in these overviews are based on the cluster data profile version 5.12.

For more information telephone 0113 39 50701 or email [educ.pmi@leeds.gov.uk](mailto:educ.pmi@leeds.gov.uk) or visit:

[www.leedsinitiative.org/ClusterDataProfile.aspx](http://www.leedsinitiative.org/ClusterDataProfile.aspx)

The map to the right gives the position of the cluster in Leeds. The map below shows the location of the Children's Centres, Primary and Secondary Schools in the cluster.



## Map Key: Farnley

### 1 - Children's Centre/s

Farnley

### 5 - Primary School/s

Cobden PS  
Greenhill PS  
Lawns Park PS  
Lower Wortley PS  
Ryecroft PS

### 1 - Secondary School/s

Farnley Park M&C College

**Cluster Overviews key****Data Period:**

The codes in the key to the right are for the time periods that the data in these reports cover. They will appear next to all data sets.

Academic Year

Calendar Year

Financial Year

Snapshot

Other

**DP:A****DP:C****DP:F****DP:S****DP:O****Cluster Overview**

Data Source: January School Census					DP: S	Data Source: January School Census					DP: S
Primary Schools		DFE	Total Number on roll			Secondary Schools		DFE	Total Number on roll		
			2010	2011	2012			2010	2011	2012	
Cobden Primary School	2487		201	221	217	Farnley Park High School	4056	826	808	829	
Greenhill Primary School	2499		328	336	341						
Lawns Park Primary School	2497		254	248	258						
Lower Wortley Primary School	2496		337	348	349						
Ryecroft Primary School	2501		134	128	151						
<b>Total</b>			<b>1254</b>	<b>1281</b>	<b>1316</b>	<b>Total</b>		<b>826</b>	<b>808</b>	<b>829</b>	

Data Source: Children's Services - Feb 2012		DP: S
Children's Centre reach area registration for families of children aged 0-5		% Registered
Cluster		59.67
Wedge		53.88
Leeds all		60.23

Data Source: Children's Services	
Children's Centre	Ofsted ID
Farnley	

Data Source: The office of National Statistics population mid-year estimates										DP: S
Population Estimates	0-15			Working Age			60/65+			
	2008	2009	2010	2008	2009	2010	2008	2009	2010	
Cluster	3146	3169	3147	10544	10782	11057	2598	2608	2635	
Wedge	44108	44366	44774	207876	208717	211509	47163	47875	48413	
Leeds all	132741	133396	134493	516578	522769	531036	129937	131536	133240	

Data Source: NHS Leeds												DP: S
Under Fives	September 2010						September 2011					
	0-1	1-2	2-3	3-4	4-5	Total	0-1	1-2	2-3	3-4	4-5	Total
Cluster	263	235	245	227	197	1167	274	257	222	247	220	1220
Wedge	3318	3278	3014	3023	2870	15503	3376	3315	3236	3035	3102	16064
Leeds all	10202	9848	9478	9195	9113	47836	9996	10173	9787	9438	9319	48713

Data Source: January School Census													DP: S
Percentage of pupils who are:	Black and Minority Ethnic			English as an Additional Language			Free School Meal Eligible			Special Education Needs			
	2010	2011	2012	2010	2011	2012	2010	2011	2012	2010	2011	2012	
<b>Primary</b>													
Cluster school	7.1	7.9	9.9	2.3	3.1	3.3	26.7	29.8	28.9	18.7	18.3	19.1	
Cluster residence	11.1	12.0	12.6	3.9	4.6	4.5	25.6	28.2	26.6	19.0	17.9	19.7	
Wedge school	19.3	20.7	22.2	13.3	14.0	14.3	18.7	19.7	19.4	15.1	15.3	15.6	
Total primary	23.6	24.8	26.4	15.8	16.5	17.1	21.5	22.2	22.0	17.8	17.8	17.4	
<b>Secondary</b>													
Cluster school	3.5	4.7	4.6	1.8	2.7	3.7	21.6	20.2	21.2	10.9	21.4	9.7	
Cluster residence	6.1	6.5	7.0	3.1	3.5	3.8	22.4	22.6	25.3	19.8	23.8	14.0	
Wedge school	15.7	16.1	16.7	9.6	9.8	10.2	16.0	16.3	16.5	19.2	17.8	14.6	
Total secondary	18.6	19.4	20.4	10.4	10.0	11.1	19.0	19.4	19.5	21.4	20.4	19.0	
<b>Leeds all</b>	<b>21.4</b>	<b>22.5</b>	<b>23.9</b>	<b>13.4</b>	<b>13.7</b>	<b>14.6</b>	<b>20.6</b>	<b>21.1</b>	<b>21.1</b>	<b>20.0</b>	<b>19.6</b>	<b>18.7</b>	

<b>Data Source: HM Revenue and Customs - taken on 31st August 2007-2009</b>										<b>DP: S</b>
<b>Child Poverty</b>	Number of children (under 16) in families in receipt of CTC or IS/JSA			Number of children (all ages) in families in receipt of CTC or IS/JSA			Number of children in poverty, by age of youngest child, 2009			
	<b>2007</b>	<b>2008</b>	<b>2009</b>	<b>2007</b>	<b>2008</b>	<b>2009</b>	<b>0-4</b>	<b>5-10</b>	<b>11-15</b>	<b>16-19</b>
Cluster	880	870	945	965	970	1050	570	290	150	40
Wedge	8010	7990	8415	8935	8950	9465	4915	2700	1460	390
Leeds all	30235	29700	31030	33690	33300	34965	18720	9640	5115	1490

<b>Data Source: Children's Services - Summer Term 2011</b>					<b>DP: S</b>	
<b>Nursery Education Grant Claims</b>	Number of eligible children	Number of: Claims by childcare setting			Resident Claims	Non Resident Claims
Cluster	367		198		152	46
Leeds all	14500		13851		9704	4148

<b>Data Source: January School Census and 2010 Index of Multiple Deprivation</b>										<b>DP: S</b>
<b>IMD</b>	% of pupils resident in most deprived areas	3% most deprived			10% most deprived			20% most deprived		
		<b>10</b>	<b>11</b>	<b>12</b>	<b>10</b>	<b>11</b>	<b>12</b>	<b>10</b>	<b>11</b>	<b>12</b>
<b>Primary</b>										
Cluster school		0.1	0.5	0.4	24.9	34.2	35.1	44.1	55.5	56.6
Cluster residence		0.0	0.0	0.0	19.7	30.7	31.5	41.2	52.4	53.6
Wedge school		1.5	2.8	2.5	15.6	15.0	15.1	26.8	27.6	27.8
Total primary		8.2	8.4	8.3	28.1	27.1	27.3	36.6	37.6	38.0
<b>Secondary</b>										
Cluster school		0.1	0.6	0.5	23.0	30.2	30.5	40.2	48.5	48.8
Cluster residence		0.0	0.0	0.0	23.3	32.6	31.8	45.7	53.6	53.0
Wedge school		2.6	3.1	2.9	15.0	14.2	14.0	24.6	25.0	24.7
Total secondary		7.0	7.5	7.6	24.0	23.5	23.8	32.3	33.5	33.6
<b>Leeds all</b>		<b>7.7</b>	<b>8.0</b>	<b>8.0</b>	<b>26.4</b>	<b>25.7</b>	<b>25.9</b>	<b>34.8</b>	<b>35.9</b>	<b>36.2</b>

<b>Data Source: January School Census and CACI ACORN</b>											<b>DP: S</b>
KEY: Wealther Achievers(WA), Urban Prosperity (UP), Comfortably Off (CO), Moderate Means (MM), Hard Pressed (HP)											
Percentage of pupils in each ACORN category	2011					2012					
	<b>WA</b>	<b>UP</b>	<b>CO</b>	<b>MM</b>	<b>HP</b>	<b>WA</b>	<b>UP</b>	<b>CO</b>	<b>MM</b>	<b>HP</b>	
<b>Primary</b>											
Cluster school	7.1	1.2	24.4	16.5	50.1	6.4	1.5	25.4	16.4	49.8	
Cluster residence	10.1	0.9	27.9	13.4	44.9	9.7	1.3	27.8	13.9	44.9	
Wedge school	14.6	8.0	31.3	13.0	32.3	14.2	8.2	31.5	13.0	32.2	
Total primary	15.4	5.9	27.8	15.8	34.3	15.0	6.0	27.7	15.9	34.6	
<b>Secondary</b>											
Cluster school	7.4	1.2	29.3	16.6	45.4	8.4	1.3	27.3	17.0	45.4	
Cluster residence	9.3	0.4	29.8	13.4	46.3	10.3	0.8	27.9	13.7	46.6	
Wedge school	18.4	7.0	32.6	12.6	28.8	18.4	7.1	32.8	12.7	28.4	
Total secondary	17.1	5.2	29.7	14.7	32.5	16.9	5.3	29.8	14.7	32.6	
<b>Leeds all</b>	<b>16.1</b>	<b>5.6</b>	<b>28.5</b>	<b>15.4</b>	<b>33.6</b>	<b>15.8</b>	<b>5.7</b>	<b>28.5</b>	<b>15.4</b>	<b>33.8</b>	

<b>Data Source: DWP information Directorate</b>													<b>DP: F</b>
KEY: Job Seekers Allowance (JSA), Incapacity Benefit (IB), Lone Parent Benefit (LPB), Total Out of Work (TOW)													
Unemployment Percentage of working age people in receipt of:	2009				2010				2011				
	<b>JSA</b>	<b>IB</b>	<b>LPB</b>	<b>TOW</b>	<b>JSA</b>	<b>IB</b>	<b>LPB</b>	<b>TOW</b>	<b>JSA</b>	<b>IB</b>	<b>LPB</b>	<b>TOW</b>	
Cluster	5.9	7.2	2.9	16.6	5.5	6.9	2.6	15.6	5.6	7.0	2.4	15.7	
Wedge	3.5	4.7	1.2	9.8	3.4	4.7	1.2	9.7	3.4	4.7	1.0	9.5	
Leeds all	4.4	5.9	1.8	12.6	4.3	5.8	1.7	12.3	4.2	5.8	1.5	12.1	

Data Source: AXCIOM Lifestyle Survey 2009-2011													DP: S																	
	Property type by %									Length of residence by %																				
	Owned			Rented - Council			Rented - Private			Less than 1 year			2-5 years			More than 5 years														
	09	10	11	09	10	11	09	10	11	09	10	11	09	10	11	09	10	11												
Cluster	58.1	57.8	54.9	33.5	32.3	29.5	8.4	9.8	0.1	4.8	7.0	2.4	25.3	27.5	24.6	69.9	65.5	73.0												
Wedge	62.9	62.8	34.8	21.7	21.6	71.9	15.4	15.6	0.0	9.4	10.7	6.1	20.6	20.6	18.3	70.0	68.7	75.5												
Leeds all	61.5	61.6	39.0	24.0	23.9	61.2	14.5	14.6	0.0	7.9	8.1	5.1	20.3	20.0	18.5	71.9	71.9	76.4												
Income by %	<10k			10-20k			20-30k			30-40k			40-50k			50k+														
	09	10	11	09	10	11	09	10	11	09	10	11	09	10	11	09	10	11												
Cluster	14	17	12	26	25	31	21	14	22	18	18	19	9	13	6	12	13	10												
Wedge	20	17	18	21	20	22	16	16	15	15	17	18	14	11	13	15	19	14												
Leeds all	20	18	18	21	20	23	16	15	16	15	18	17	14	13	13	14	16	14												
Struggling with payments by %	Food									Bills			Mortgage																	
				09			10			11			09			10			11											
Cluster				19.0			11.8			7.9			22.8			12.8			10.8			3.6			1.6			3.0		
Wedge				15.4			11.1			6.2			15.2			12.6			7.5			1.7			2.0			1.6		
Leeds all				15.9			10.8			6.4			16.3			13.0			8.3			2.2			2.2			1.7		

## Being Healthy

Data Source: NHS Leeds													DP: Various - Listed with each report											
Birth Data	3 year rolling average of births below 2.5kg						Number and rate of conceptions per 1000 15-17 year olds																	
	% low birth weight babies						DP: O			Number			Rate											
	2006-08		2007-09		2008-10		June to May			2008-09		2009-10	2008-09		2009-10									
Cluster	10.1		11.6		10.3		Cluster			38		35	57		52									
Wedge	7.1		7.1		6.8		Wedge			380		355	41		40									
Leeds all	7.8		7.8		7.6		Leeds all			1220		1145	45		43									
DP: C	% of women receiving a health and social care needs assessment at 12 weeks as a percentage of live births in the same year						DP: F			% Initiating breastfeeding April to March			% breastfeeding at 6 weeks April to March											
	2009		2010		2011		2009-10			2010-11		2009-10		2010-11										
Cluster	81.8		84.7		85.0		51.8			53.2		28.2		24.0										
Wedge	83.7		85.7		85.3		69.6			68.0		42.2		40.1										
Leeds all	81.6		82.9		84.0		67.6			65.1		40.4		39.3										
DP: C	Number of emergency admissions by age group 2007-11						Number of emergency admissions to hospital for injury, poisoning and certain other consequences of external causes by age group																	
	0-4		5-10		11-18		0-4		5-10		11-18													
Cluster	744		215		490		87		68		218													
Wedge	9185		2518		6030		1108		809		2250													
Leeds all	29793		8247		18194		3419		2522		6711													
Immunisation Data	% of 2 year olds receiving vaccinations in quarter 3 for:						% of 5 year olds receiving vaccinations in quarter 3 for:																	
	DP: F			MMR			DP: F			MMR														
Cluster	98		98		97		90		91		94		95		91		94		95		88		90	
Wedge	97		97		98		88		90		95		95		93		96		93		90		94	
Leeds all	96		96		97		86		88		94		95		94		96		91		91		95	

Data Source: National Child Measurement Programme													DP: A					
Obesity	Obesity in Reception						Obesity in Year 6											
	% Obese			% Obese or overweight			% Obese			% Obese or overweight								
	08-09	09-10	10-11	08-09	09-10	10-11	08-09	09-10	10-11	08-09	09-10	10-11						
Cluster	11.5	12.9	13.5	23.3	26.1	20.8	25.4	25.3	20.8	39.5	40.1	34.4						
Wedge	9.6	10.0	9.4	23.0	24.4	23.1	20.6	20.2	18.7	34.2	33.9	32.7						
Leeds all	9.4	10.2	9.7	21.7	23.7	23.4	20.3	20.7	20.0	34.3	35.1	34.3						
Obesity	Obesity in Reception						Obesity in Year 6											
	3 year average 2008-2011						3 year average 2008-2011											
Cluster	12.71			23.46			24.09			38.28								
Wedge	9.66			23.49			19.88			33.66								
Leeds all	9.77			22.96			20.32			34.56								

## Stay Safe

Data Source: Children's Services					DP: Various - Listed with each report						
Number of LAC and Child protection plans	The number of children and young people looked after by the Local Authority - March based on home address before coming into care					based on placement address			The number of children with child protection plans - March		
	<i>DP: S</i>								<i>DP: S</i>		
	2011		2012		2012		2011		2012		
Cluster	22		34		19		39		38		
Wedge	0		411		326		0		379		
Leeds all	1439		1454		1454		947		1019		
Number of Common Assessments (CAFs)					Social Care			Social Care Referrals		Requests for Service	
<i>DP: C</i>					<i>DP:A</i>					<i>DP:S</i>	
		2008	2009	2010	2011	2009	2010	2011	Feb 11 - Jan 12		
Cluster	16		13		19		18		734		
Wedge	140		243		312		278		8460		
Leeds all	457		849		1115		892		30539		
Number of Child and Adolescent Mental Health Services referrals											
<i>DP: S</i>											
		aged 11 and under			aged 12-18			total referrals			
September-October		2009-10		2010-11		2009-10		2010-11		2009-10 2010-11	
Cluster	48		33		69		40		117 73		
Wedge	512		362		1054		588		1566 950		
Leeds all	1767		1124		2976		1730		4743 2854		

## Make a positive Contribution

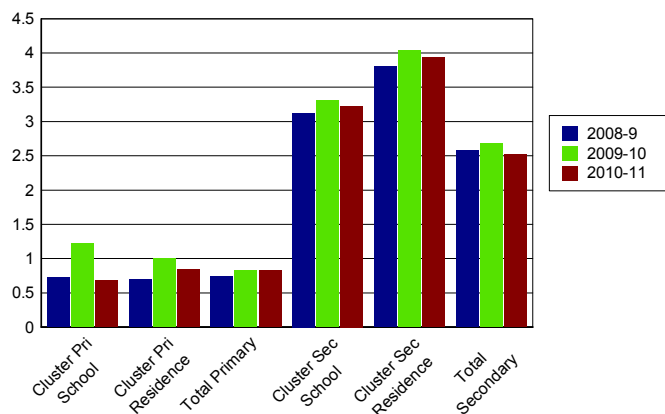
Data Source: West Yorkshire Police										<i>DP: C</i>	
Property Crime		Burglary dwelling		Burglary elsewhere		Criminal damage		Robbery		Vehicle crime	
Number of recorded crimes for:		10 11		10 11		10 11		10 11		10 11	
Cluster	209 259		112 122		334 271		17 15		188 276		
Wedge	4156 4057		2127 2015		4299 3249		379 413		2945 2637		
Leeds all	9508 8487		5681 5408		13599 10426		1297 1226		9168 7971		
Personal Crime						Drug Offences		Theft from person		Violent crime	
Number of recorded crimes for:						10 11		10 11		10 11	
Cluster					63		217 194				
Wedge					187 934		290 525		2966 2712		
Leeds all					1248 3192		2235 3034		11233 10896		
Domestic Violence Incidents		Number of incidents recorded with a domestic qualifier or disposition code on the Storm WYP incident recording system - 2011									
Cluster	344										
Wedge	3695										
Leeds all	14525										

Data Source: Youth Offending Service										<i>DP: A</i>		
Youth Offending		Number of Offenders				Number of Offences						
		07-08	08-09	09-10	10-11	07-08	08-09	09-10	10-11			
Cluster	67		50		27		39		183 131 56 71			
Wedge	627		474		334		355		1616 1031 732 785			
Leeds all	2741		2166		1522		1511		6331 4883 3134 3150			
April 2010 - March 2011 Number of offences by young offenders												
		Burglary	Breaches	Criminal Damage	Drugs Offences	Motoring and Vehicle	Other	Public Order	Theft and handling	Violence against the person		
Cluster	6		7		11		SUPP		7		SUPP 6 20 7	
Wedge	96		68		86		50		62 67 58 171 127			
Leeds all	291		270		328		204		218 358 282 612 587			

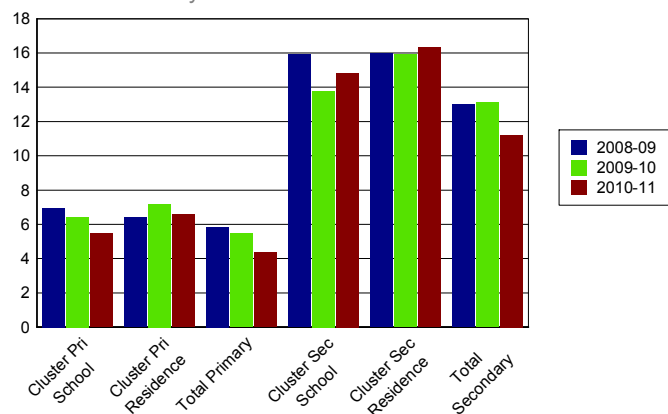
Data Source: School Census												DP: A		
Attendance and persistent absence by percentage	Attendance			Authorised Absence			Unauthorised Absence			Persistent Absence 15%				
	08-09	09-10	10-11	08-09	09-10	10-11	08-09	09-10	10-11	08-09	09-10	10-11		
<b>Primary</b>														
Cluster school	94	93	94	6	5	5	0.7	1.2	0.7	6.9	6.4	5.5		
Cluster residence	94	94	94	6	5	5	0.7	1.0	0.8	6.4	7.2	6.6		
Total primary	94	94	95	5	5	4	0.7	0.8	0.8	5.9	5.5	4.3		
<b>Secondary</b>														
Cluster school	91	91	91	6	6	6	3.1	3.3	3.2	15.9	13.8	14.8		
Cluster residence	90	90	90	6	6	6	3.8	4.0	3.9	16.0	15.9	16.3		
Total secondary	92	92	92	6	6	5	2.6	2.7	2.5	13.0	13.1	11.2		

**% Unauthorised Absence**

2008-2011

**% Persistent Absence**

by 15% measure 2008-2011



Data Source: Children's Services												DP: A		
Exclusions	Fixed Term Exclusions						Permanent Exclusions							
	Number			Rate per thousand			Number			Rate per thousand				
Primary	08-09	09-10	10-11	08-09	09-10	10-11	08-09	09-10	10-11	08-09	09-10	10-11		
Cluster school	22	6	8	17.5	4.8	6.2	0	0	0	0.0	0.0	0.0		
Cluster residence	17	6	9	10.8	3.8	5.7	0	0	0	0.0	0.0	0.0		
Total primary	467	371	455	7.7	6.0	7.3	2	2	2	0.0	0.0	0.0		
<b>Secondary</b>														
Cluster school	210	136	98	253.3	164.6	121.3	2	1	2	2.4	1.2	2.5		
Cluster residence	180	140	114	187.5	145.1	122.3	2	2	2	2.1	2.1	2.1		
Total secondary	4350	4286	3806	93.6	93.1	83.2	52	57	44	1.1	1.2	1.0		

## Enjoy and Achieve

**Data Source: Keypas and DFE performance tables**
**DP: A**
**Foundation Stage Profile Data** The percentage of pupils achieving a good level of development (78+ points overall and 6+ points in all PSE and CCL strands)

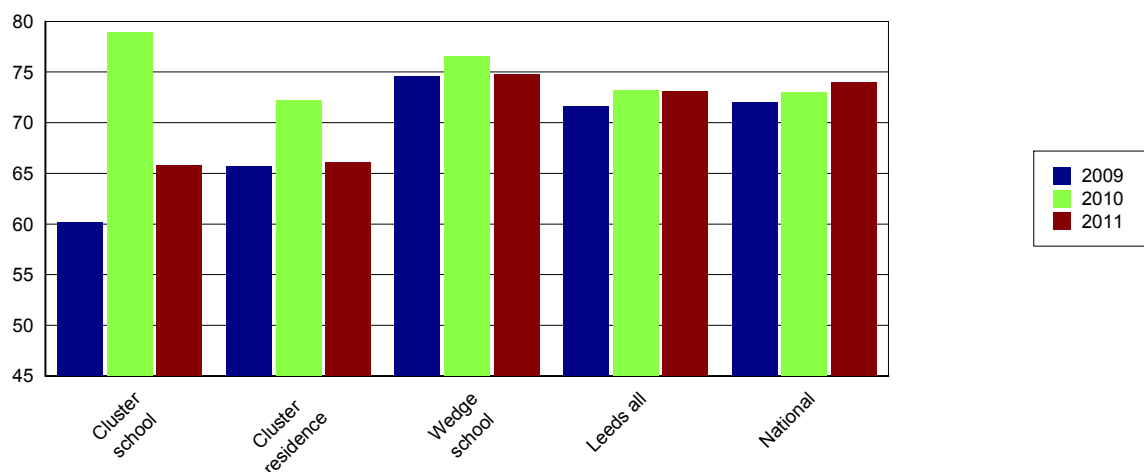
	2008	2009	2010	2011
Cluster school	41	60	49	58
Cluster residence	44	53	50	62
Leeds all	47	51	53	58

KS2 Data DP: A	English 4+			English 5+			Maths 4+			Maths 5+			English & Maths 4+		
	09	10	11	09	10	11	09	10	11	09	10	11	09	10	11
Cluster school	74	82	73	26	33	21	66	87	72	20	27	23	60	79	66
Cluster residence	76	77	75	22	28	19	71	80	74	25	25	23	66	72	66
Wedge school	83	82	83	32	34	30	80	82	80	33	33	35	75	77	75
Leeds all	79	79	81	28	31	32	77	79	78	33	31	32	72	73	73
National	80	80	82	29	33	29	79	79	80	35	34	35	72	73	74

KS2 Data - Expected progress	Made 2 levels of progress in English		Made 2 levels of progress in Maths	
	Number of pupils	Percentage	Number of pupils	Percentage
Cluster school	126	85.7	115	78.2
Wedge school	2174	88.1	2092	84.7
Leeds all	6334	88.6	6087	85.0
National		84.0		83.0

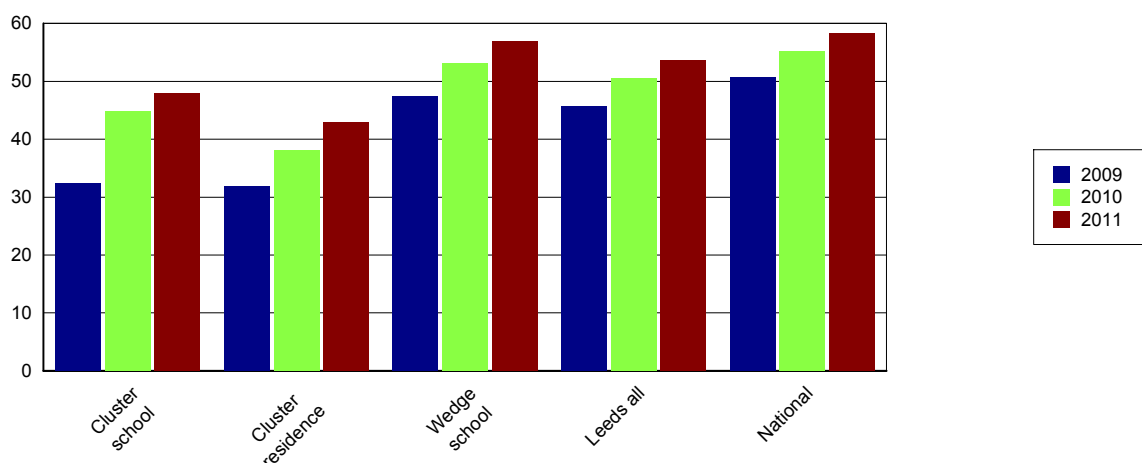
### Percentage of English and Maths

Level 4+



Data Source: EPAS and DFE performance tables												DP: A		
The results are for GCSE & equivalent qualifications. The calculation of achieving no qualifications includes all qualifications														
KS4 Data	% of 5+ A*-C			% of 5+ A*-C inc Eng & Maths			% English Baccalaureate	% of 5+ A*-G			% achieving no qualifications			
	09	10	11	09	10	11		09	10	11	09	10	11	
Cluster school	46	78	76	32	45	48	9	87	95	95	3	1	1	
Cluster residence	57	70	73	32	38	43	7	89	92	90	3	2	2	
Wedge school	68	75	81	47	53	57	19	92	94	96	1	1	1	
Leeds all	67	76	82	46	51	54	13	91	94	94	2	2	1	
National	70	76	81	51	55	58	15	94	95	95	1	1	1	

### Percentage 5 A\*-C Including English and Maths



## Achieve Economic Well Being

Key: Not in Employment, Education or Training (NEET), In Employment, Education or Training (EET), in Full time Education (FE)													
Data Source: November destination survey													DP: S
NEET/FE		Number of NEET			% NEET			Number of FE			% FE		
		2009	2010	2011	2009	2010	2011	2009	2010	2011	2009	2010	2011
Cluster school	Year 11	14	SUPP	SUPP	9	SUPP	SUPP	111	121	125	74	84	87
	Year 12	5	SUPP	SUPP	9	SUPP	SUPP	38	30	SUPP	69	94	
	Year 13	SUPP	SUPP	SUPP	SUPP	SUPP	SUPP	11	18	19	50	55	76
Cluster residence	Year 11	29	17	12	13	8	6	157	166	156	71	81	82
	Year 12	8	SUPP	SUPP	11	SUPP	SUPP	55	59	39	72	89	93
	Year 13	SUPP	SUPP	SUPP	SUPP	SUPP	SUPP	21	30	41	68	63	80
Leeds all	Year 11	646	393	357	8	5	5	6703	7194	6564	80	87	87
	Year 12	132	67	115	3	2	3	3436	3476	3550	90	93	93
	Year 13	121	135	120	5	4	4	2067	2350	2593	78	76	84

Data Source: Integrated Youth Support Service										DP: O	
16-18 NEET and EET Nov 2011 to Jan 2012	NEET		EET		Not Known		Other Activity				
	Number	%	Number	%	Number	%	Number	%			
Cluster	56	10.0	493	88.1	SUPP	SUPP	SUPP	SUPP			
Wedge	452	6.1	6860	93.0	104	1.4	21	0.3			
Leeds all	1538	7.0	20170	91.7	343	1.6	58	0.3			

**Please Note:** Leeds totals for 16-18 NEET will not match publicised totals as published totals include a proportion of those whose status has expired